



www.curtain-and-divider.com
989-414-1209

Installation Directions

Ceiling Mount



WARNING

Allow the curtain(s) to reach room temperature (above 50°F/10°C) before unfolding. If unfolded cold the curtains can cold crack and this will not be covered by AKON.

IMPORTANT

Make sure the ceiling height is at least 3" higher than your curtain height.

STEP 1 - INVENTORY

Make sure you have all of your components. Compare your AKON order confirmation and packing slips if you have one to what you have received. Don't start until you have all of the parts as sometimes the shipping carriers split up shipments or it is coming from more than one AKON warehouse. Contact Akon Curtains if anything is missing. Just use our general contact form or call in.



STEP 2 - LAYOUT THE TRACK - (DON'T CONNECT YET)

Layout the track on the floor so that you can determine if you need to make any cuts to shorten the tracks. Simply lay the track and track supports out **without connecting them** together. At this stage you are just making sure your layout is ok and that you know where you are going to anchor the ceiling supports.

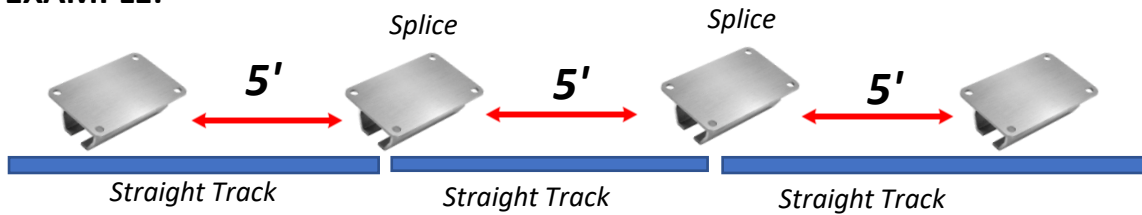
SPACING THE SUPORTS

You should have enough track supports to support the track approximately every 5-6'. Space them so that they anchor into solid structure.



You can often space out the supports farther than 5' but if the track looks like its bending then bring them closer together.

EXAMPLE:



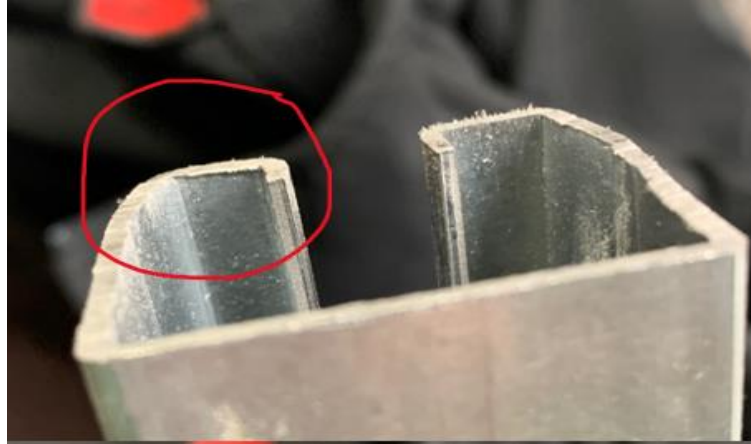
STEP 3 - CUT THE TRACK (IF NEEDED)

Now laying on your floor you should have track in your desired layout. At this point you may or may not want to cut the track down to shorten it. If you do, just trim any edges off of the track to get your desired layout. You can use a hand saw or if lots of cuts are needed a Sawzall with a metal cutting blade is ideal.



Tip!

If you are cutting your track make sure there are no burrs from the cut. These will bind the rollers and make it hard to move your curtain. If you have burrs simply file them down.

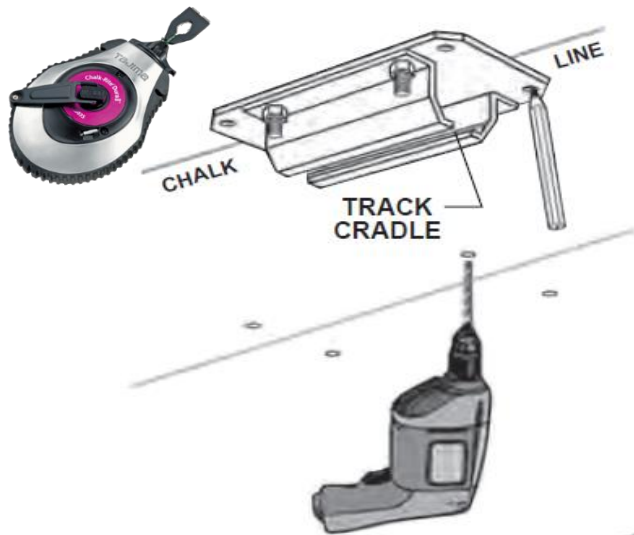


STEP 4 - PREPARE FOR MOUNTING

IMPORTANT: Make sure that all mounting connectors will be attached to firm support material that can support the weight of the track and the curtain before proceeding.

Step 1 - Use a laser line or chalk line, make a straight line on the ceiling for the path of the curtain track.

Step 2 - Now from one of the sides drill and anchor your first ceiling splice track support on the center of your chalk line / laser line. This will be your starting point.



Tip!

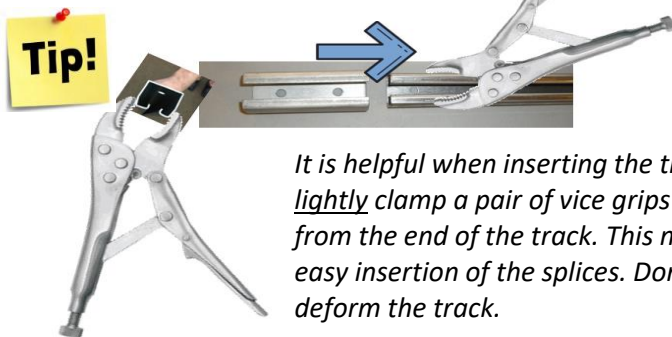
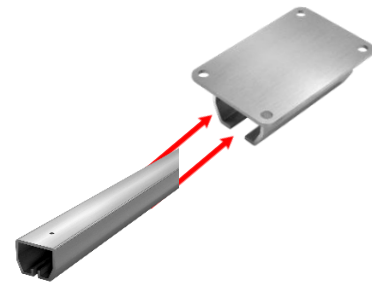
Not all ceilings are level. A slightly unlevel ceiling should not be an issue but if it is very unlevel then you may need to put some shims under the track supports to help level it out. Shims are not provided by AKON.

STEP 5 - START ATTACHING THE TRACK AND SUPPORTS

Using the layout that is on the floor as your guide, you now will need to raise yourself into the air using a manlift or ladder (depending on the height of your ceiling).

STEP 1 - Once in the air, fasten the first straight track to the already installed ceiling track support.

STEP 2 - Now add the next ceiling support to that track and drill and anchor it into the ceiling. Keep repeating this process until you installed all of the track and supports you had laid out on the floor.



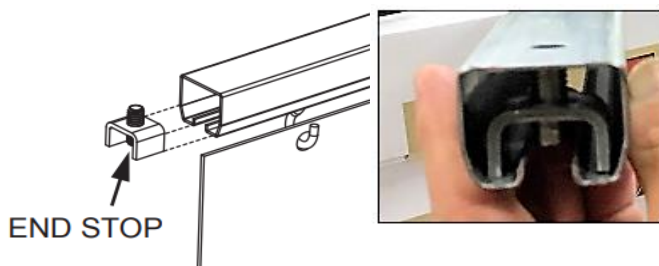
It is helpful when inserting the track into the splices to lightly clamp a pair of vice grips onto the track about 4" from the end of the track. This narrows the track and allows easy insertion of the splices. Don't pinch too hard or you will deform the track.

Tip! You might find it faster to get some help and install the track in manageable sections that are pre-assembled on the floor rather than doing it all in the air.

Tip! The type of ceiling construction will determine how you fasten the curtain hardware to the ceiling. Consult with a hardware store for recommendations based on your structure.

STEP 6 - ATTACH END STOP

Attach only 1 end stop onto either side of the track. We are only installing one right now because we need to add the roller hooks next.



STEP 7 - INSERT THE ROLLER HOOKS

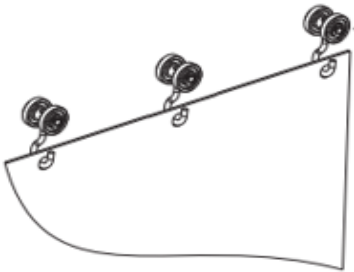
Insert the roller hooks and slide them into the track. You will likely have some extra roller hooks that you can keep as spares. Then add the other end stop so the rollers can't fall out.



STEP 8—HANG THE CURTAIN

Now hang the curtain onto the roller hooks. Each grommet on the curtain should be hanging from a roller hook.

NOTE: *If you have a curtain taller than 15' then have a friend help you hold the curtain during this process. Never let the curtain hang from a single hook or it could pop out the grommet from the weight. Congratulations! Your Curtain Is Ready to Use!*



www.curtain-and-divider.com

989-414-1209