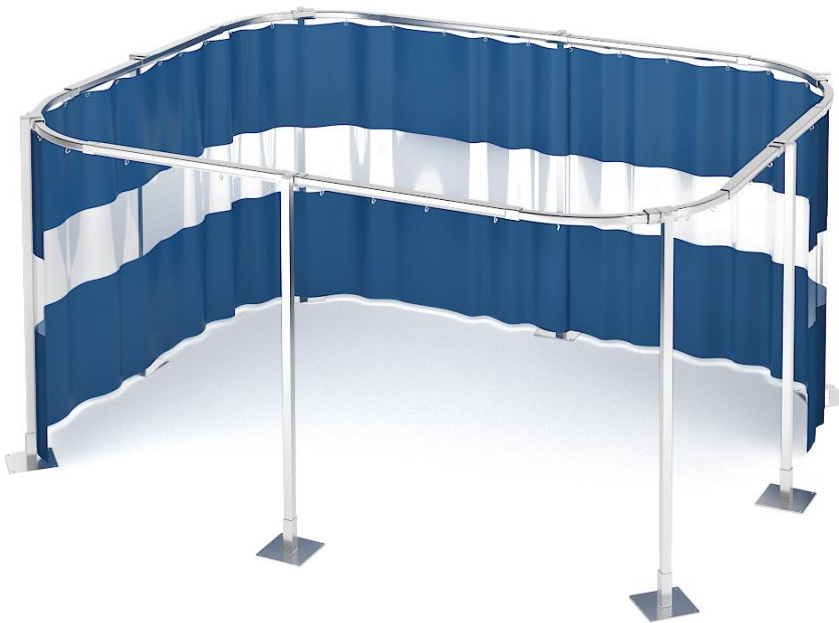




www.curtain-and-divider.com
989-414-1209

Installation Directions

Freestanding Curtain Tracks



WARNING

Allow the curtain(s) to reach room temperature (above 50°F/10°C) before unfolding. If unfolded cold the curtains can cold crack and this will not be covered by AKON.

IMPORTANT

Make sure the ceiling height is at least 3" higher than your curtain height.

STEP 1 - INVENTORY

Make sure you have all of your components.. Compare your AKON order confirmation and packing slips if you have one to what you have received. Don't start until you have all of the parts as sometimes the shipping carriers split up shipments or it is coming from more than one AKON warehouse. Contact Akon Curtains if anything is missing. Just use our general contact form or call in.



STEP 2 - LAYOUT THE HORIZONTAL CURTAIN TRACK - (DON'T CONNECT IT YET)

Layout the track on the floor so that you can determine if you need to make any cuts to shorten the horizontal curtain tracks. Simply lay the track and track supports out **without fully connecting them** together. At this stage you are just making sure your layout is ok and that you know where you are going to attach the vertical track supports.

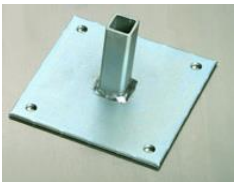


Tip!

See the last pages of this PDF for exploded images of how the system goes together.

STEP 3 - LAYOUT THE BASE PLATES - (DON'T CONNECT IT YET)

Layout the baseplates on the floor where you will be placing them. Again, at this stage you are just making sure your layout is ok and that you know where you are going to attach the vertical track supports.



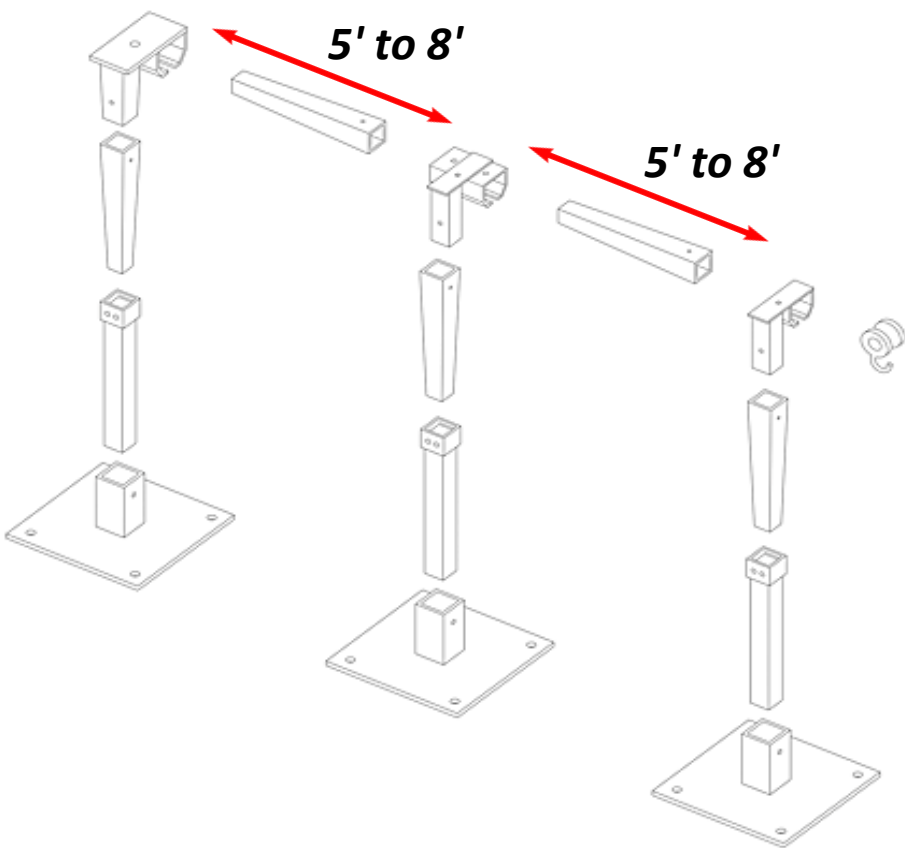
Tip!

You can often space out the vertical supports farther than 5-6' but if the track looks like its bowing down then bring them closer together.



SPACING THE SUPORTS

EXAMPLE:



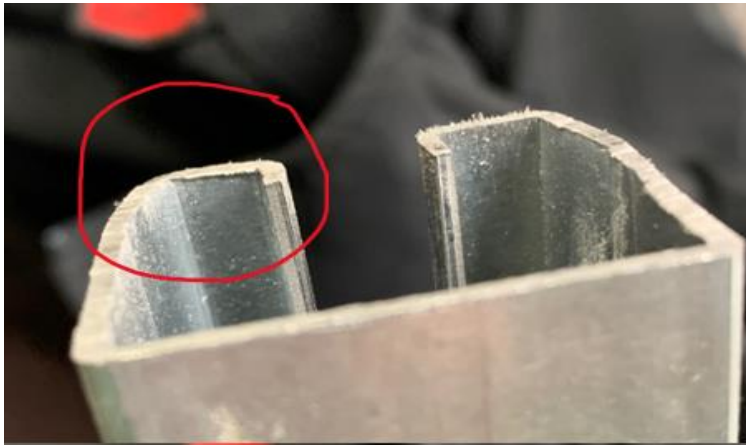
STEP 4 - CUT THE HORIZONTAL CURTAIN TRACK (IF NEEDED)

At this point, you may or may not want to cut the horizontal curtain tracks to shorten them. You can use a hand hack saw or if lots of cuts are needed a Sawzall with a metal cutting blade is ideal.



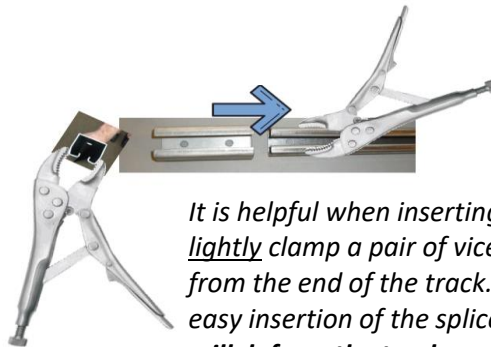
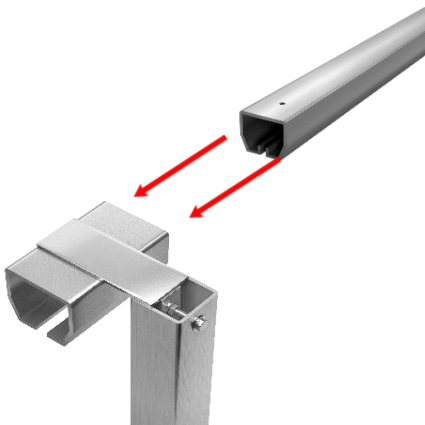
Tip!

If you are cutting your track make sure there are no burrs from the cut. These will bind the rollers and make it hard to move your curtain. If you have burrs simply file them down.



STEP 5 - FULL ASSEMBLY

Now that the curtain track is to your desired length, its now time to fully assemble the system. With an assistant, start at one vertical upright and work your way down to the next upright. At this stage, don't use the set screws as the vertical uprights will likely need to be cut down for proper height.

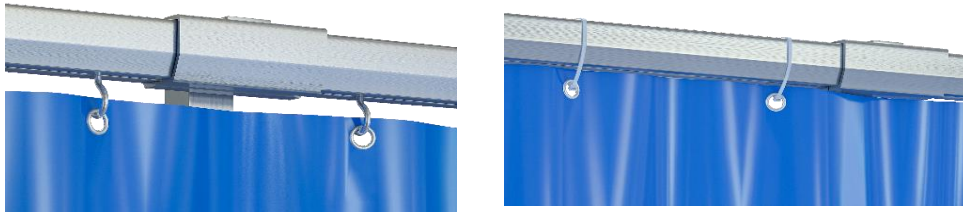


Tip!

*It is helpful when inserting the track into the splices to lightly clamp a pair of vice grips onto the track about 4" from the end of the track. This narrows the track and allows easy insertion of the splices. **Don't pinch too hard or you will deform the track.***

STEP 6 - MEASURE FOR THE CURTAIN | TRIM THE UPRIGHTS

Now hang some of the curtain from the roller(s) (or zip ties if you ordered a static curtain) to determine the location to trim the vertical uprights. The curtain should be about 1" off of the floor when properly hung. **Note** that AKON ships tracks in fixed lengths, which will be taller than your quoted height. We do this so that the customer can trim the track to match slopes in the floor and to ensure the curtain is a perfect fit.



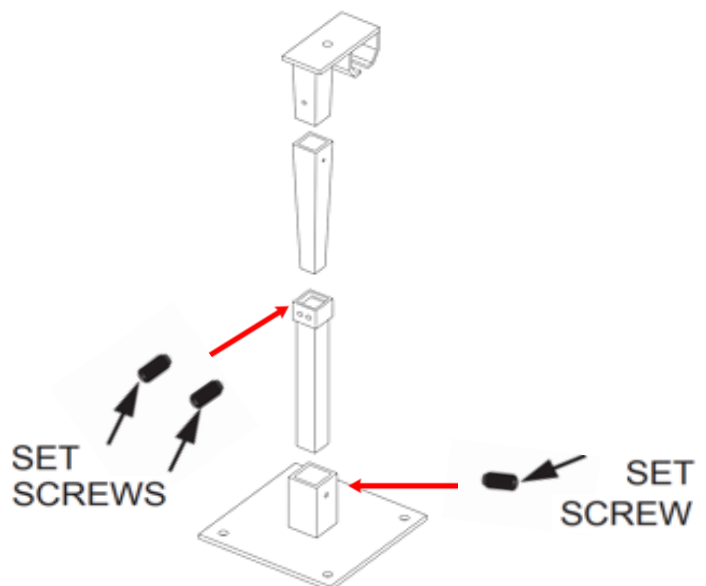
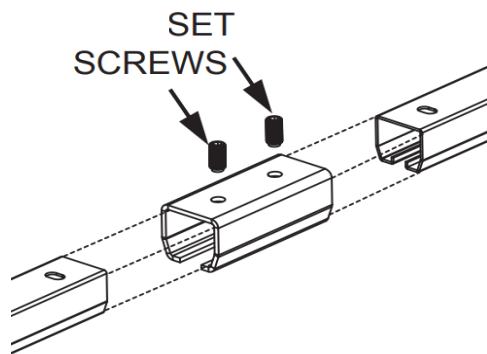
Walk around the enclosure and use a sharpie to mark the cut locations on all of the uprights.

STEP 7 - INSERT THE SET SCREWS | TRACKS + UPRIGHTS

After trimming the uprights, reinsert them into the base plates. Now move along, re-connecting the tracks together with the track supports, and insert the set screws. Loosely place 2 allen screws onto each splice connector and give it approximately one and a half turns. You want to feel it getting snug but not tight.

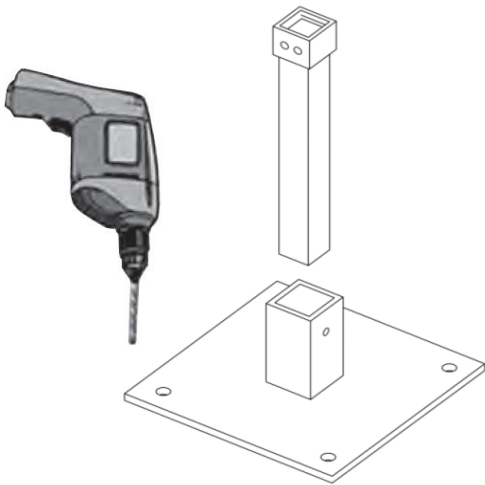


Don't overtighten the set screws or it will deform the track and bind the roller hooks.



STEP 8 - ANCHOR THE BASE PLATES

If your freestanding hardware is taller than 6', it should be anchored to the concrete floor to protect against it tipping over and injuring anyone.



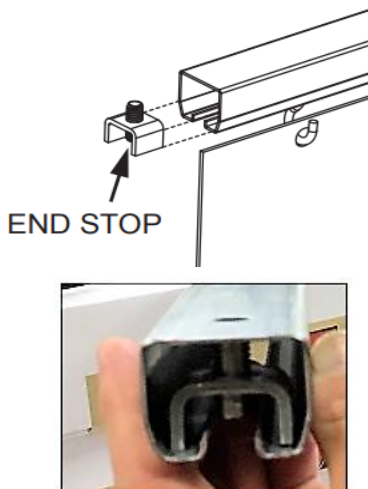
Tip!

Anchors are not provided as our customers have different materials they attach to. However, A good anchor for concrete is Red Head 3/8" x 3" wedge anchors.

STEP 9 - ATTACH END STOPS

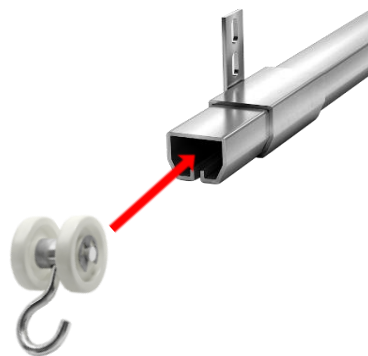
Attach only 1 end stop onto either side of the track. We are only installing one right now because we need to add the roller hooks next.

NOTE: *If you have a 4 sided enclosure with radius corners you wont need end stops.*



STEP 10 - INSERT THE ROLLER HOOKS

Insert the roller hooks and slide them into the track. You will likely have some extra roller hooks that you can keep as spares. Then add the other end stop so the rollers can't fall out.

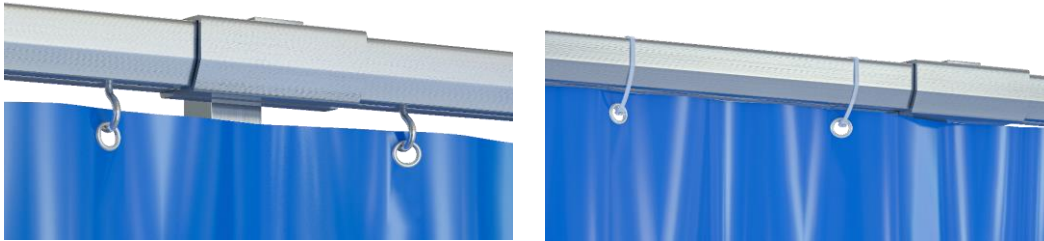


STEP 11 - HANG THE CURTAIN

Now with the hardware fully assembled, hang the curtain onto the roller hooks or zip ties depending on your order. Each grommet on the curtain should be hanging from a roller hook or zip tie.

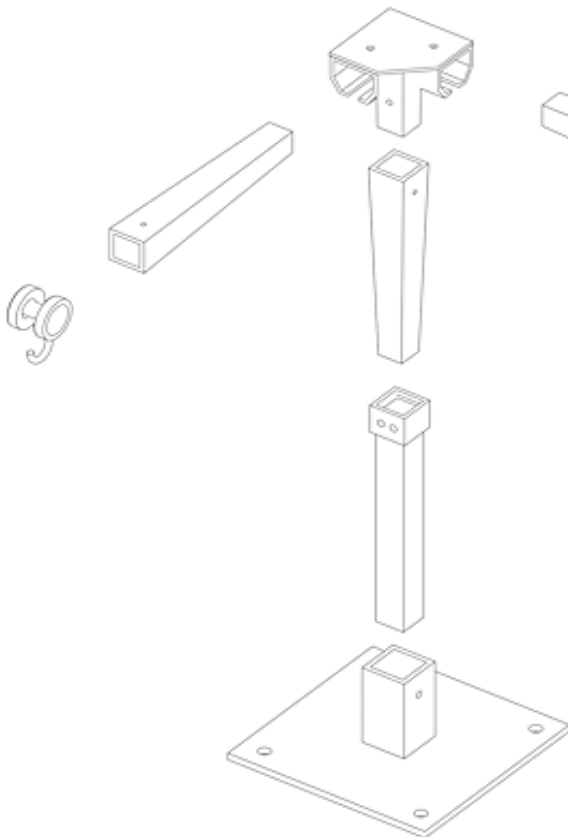
NOTE: If you have a curtain taller than 7' then have a friend help you hold the curtain during this process. Never let the curtain hang from a single hook or it could pop out the grommet from the weight. **Congratulations!**

Your Curtain Is Ready to Use!

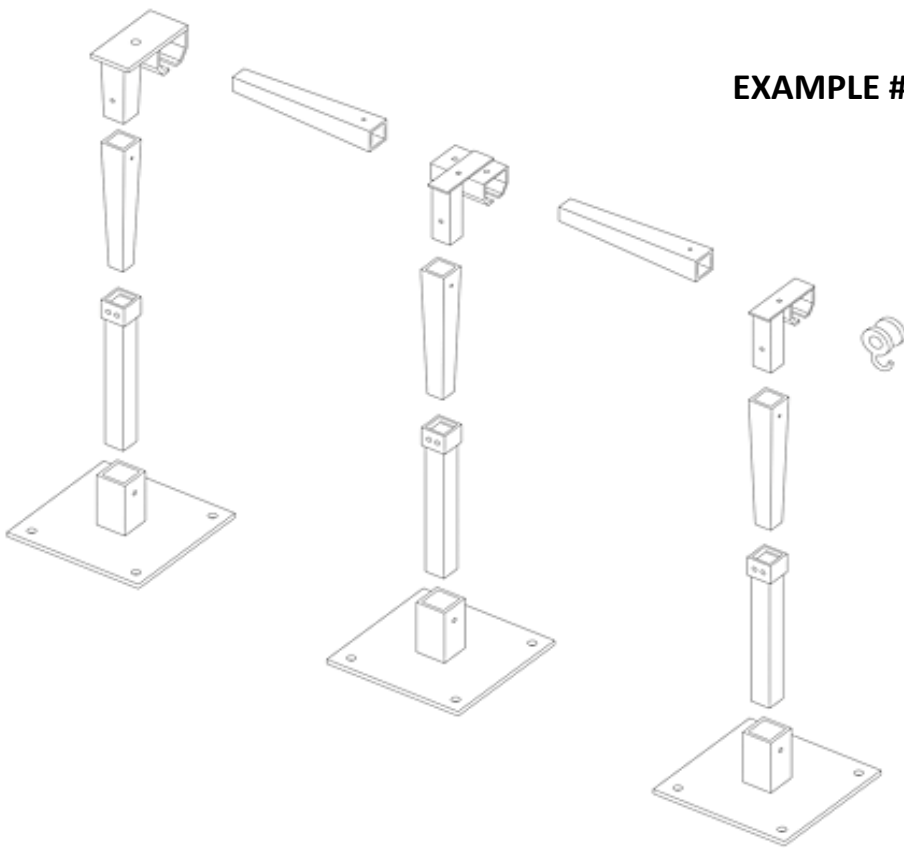


COMMON SETUPS

EXAMPLE #1



EXAMPLE #2



EXAMPLE #3

