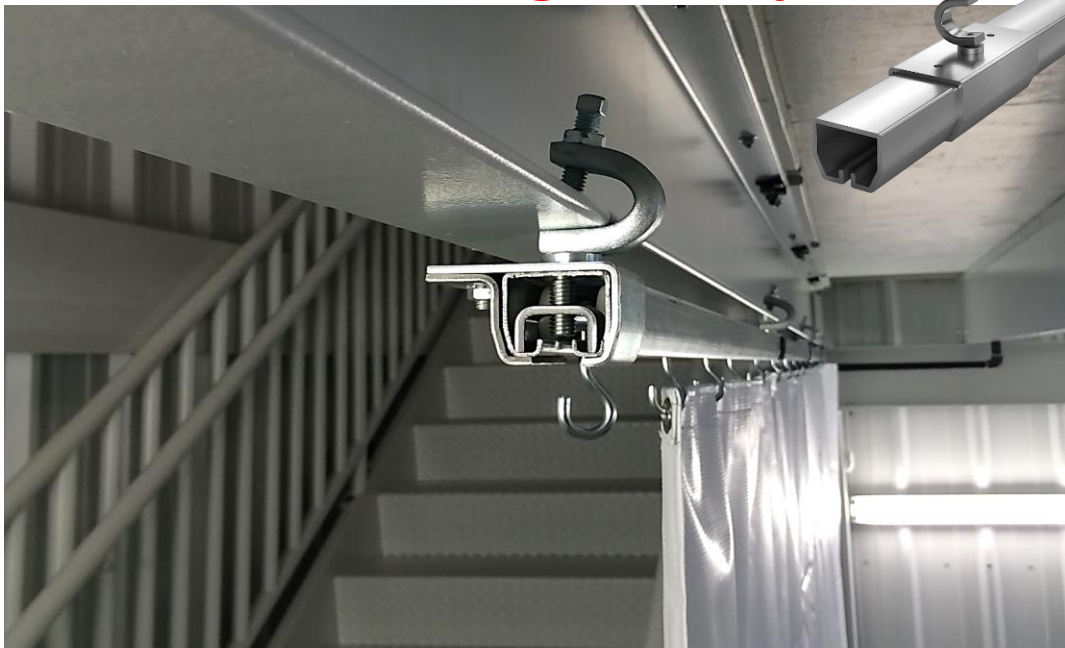


Installation Directions

I-Beam Flange Clamp



WARNING

Allow the curtain(s) to reach room temperature (above 50°F/10°C) before unfolding. If unfolded cold the curtains can cold crack and this will not be covered by AKON.

IMPORTANT

Make sure the ceiling height is at least 3" higher than your curtain height.

STEP 1- INVENTORY

Make sure you have all of your components.. Compare your AKON order confirmation and packing slips if you have one to what you have received. Don't start until you have all of the parts as sometimes the shipping carriers split up shipments or it is coming from more than one AKON warehouse. Contact Akon Curtains if anything is missing. Just use our general contact form or call in.



STEP 2- LAYOUT THE TRACK - (DON'T CONNECT YET)

Layout the track on the floor so that you can determine if you need to make any cuts to shorten the tracks. Simply lay the track and track supports out **without connecting them** together. At this stage you are just making sure your layout is ok and that you know where you are going to clamp the track.

SPACING THE SUPORTS

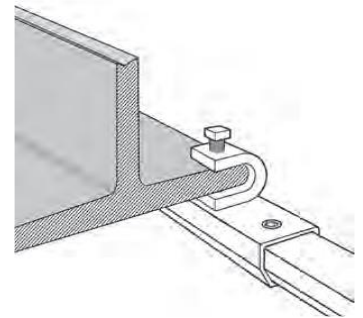
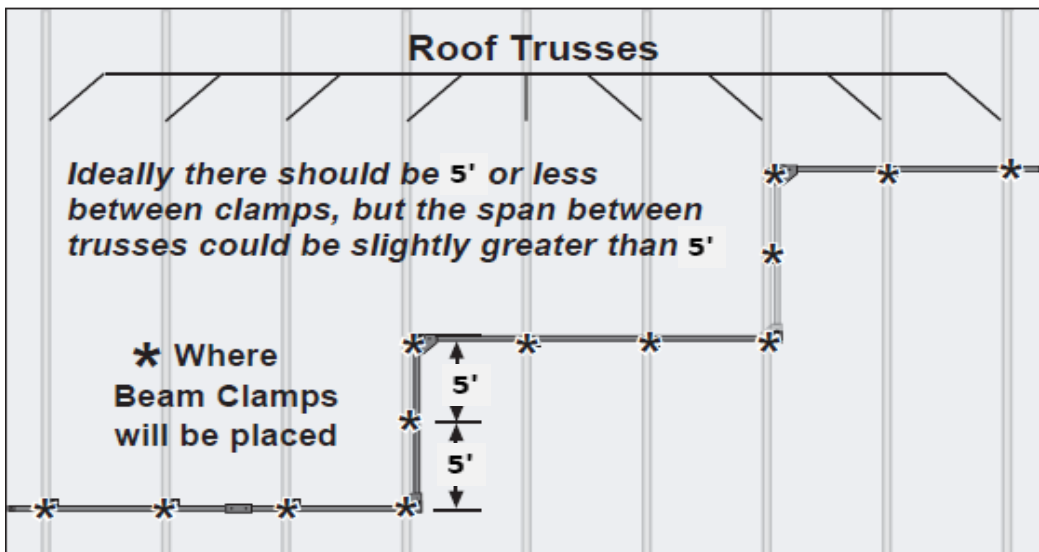
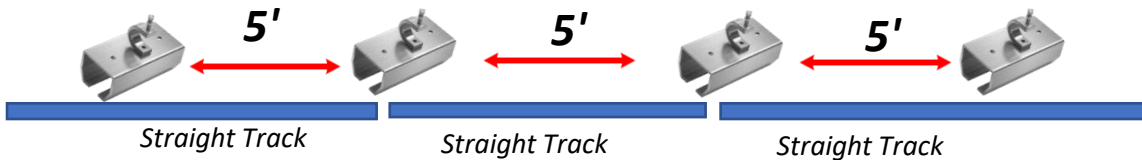
You should have enough track supports to support the track approximately every 5-6'. As you space out the track supports try to visualize where you will clamp them from above you.



You can sometimes space out the supports farther than 5' but if the track looks like its bending then bring them closer together.

Special Notes

- The beam you are attaching to must be level to the floor
- You can attach to the beam in either a parallel or perpendicular orientation as the top clamp does swivel



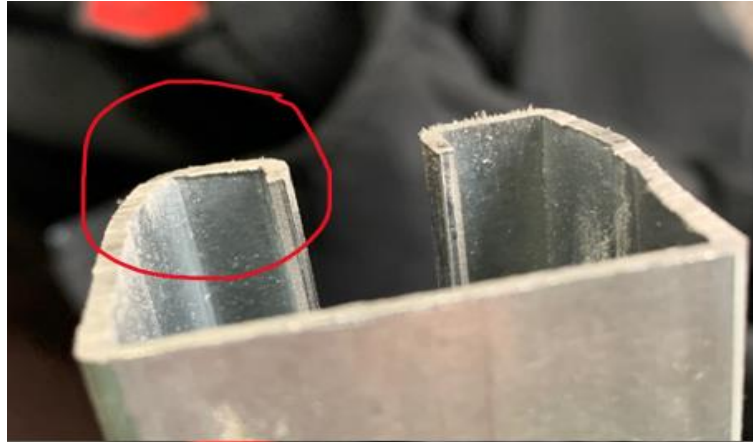
STEP 3 – CUT THE TRACK (IF NEEDED)

Now laying on your floor you should have track in your desired layout. At this point you may or may not want to cut the track down to shorten it. If you do, just trim any edges off of the track to get your desired layout. You can use a hand saw or if lots of cuts are needed a Sawzall with a metal cutting blade is ideal.



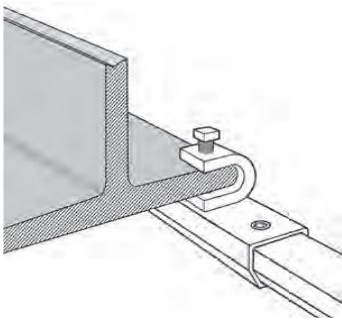
Tip!

If you are cutting your track make sure there are no burrs from the cut. These will bind the rollers and make it hard to move your curtain. If you have burrs simply file them down.



STEP 4 – START ATTACHING THE TRACK SUPPORTS

Using the layout that is on the floor as your guide, you now will need to raise yourself into the air using a manlift or ladder (depending on the height of your ceiling). Once in the air, attach the track support clamps starting from one side and working your way to the other side.

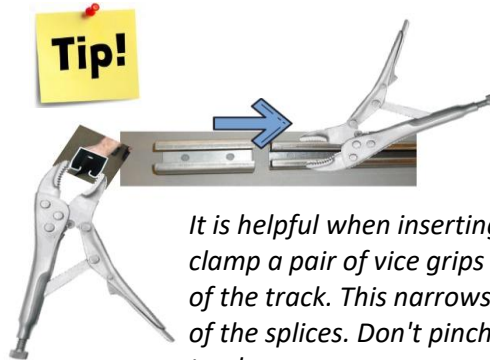
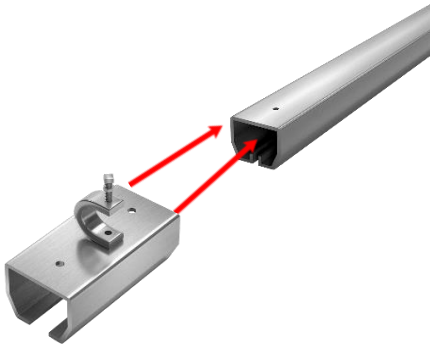


Tip!

You might find it faster to get some help and install the track in manageable sections that are pre-assembled on the floor rather than doing it all in the air.

STEP 5 - ATTACH THE TRACKS TO THE SUPPORTS

Now attach the straight track sections to those hanging splice connectors. Again, we will start from the one side working our way to the other side track section by track section.

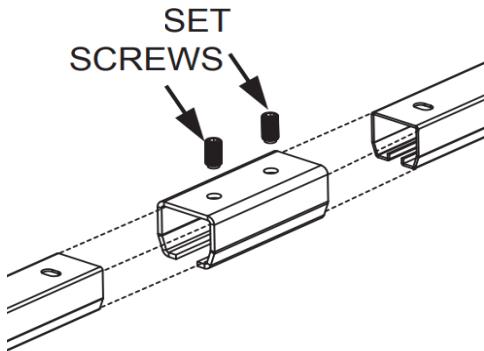


Tip!

It is helpful when inserting the track into the splices to lightly clamp a pair of vice grips onto the track about 4" from the end of the track. This narrows the track and allows easy insertion of the splices. Don't pinch too hard or you will deform the track.

STEP 6 - INSERT THE SET SCREWS

As you move along connecting the tracks together with the track supports insert the set screws. Loosely place 2 allen screws onto each splice connector and give it just one and a half turns.

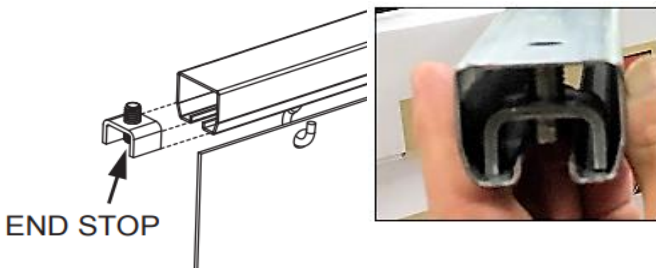


Tip!

Don't overtighten the set screws or it will deform the track and bind the roller hooks.

STEP 7 - ATTACH END STOP

Attach only 1 end stop onto either side of the track. We are only installing one right now because we need to add the roller hooks next.



STEP 8 - INSERT THE ROLLER HOOKS

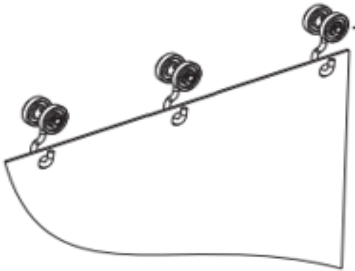
Insert the roller hooks and slide them into the track. You will likely have some extra roller hooks that you can keep as spares. Then add the other end stop so the rollers can't fall out.



STEP 9 – HANG THE CURTAIN

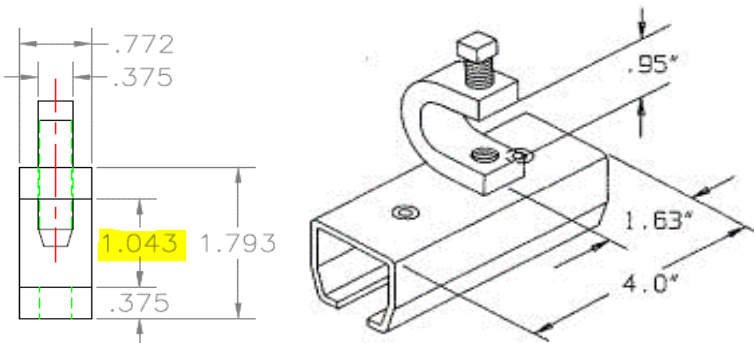
Now hang the curtain onto the roller hooks. Each grommet on the curtain should be hanging from a roller hook.

NOTE: If you have a curtain taller than 15' then have a friend help you hold the curtain during this process. Never let the curtain hang from a single hook or it could pop out the grommet from the weight. Congratulations! Your Curtain Is Ready to Use!



USEFULL INFORMATION

The clamp has a 1" opening



www.curtain-and-divider.com

989-414-1209



